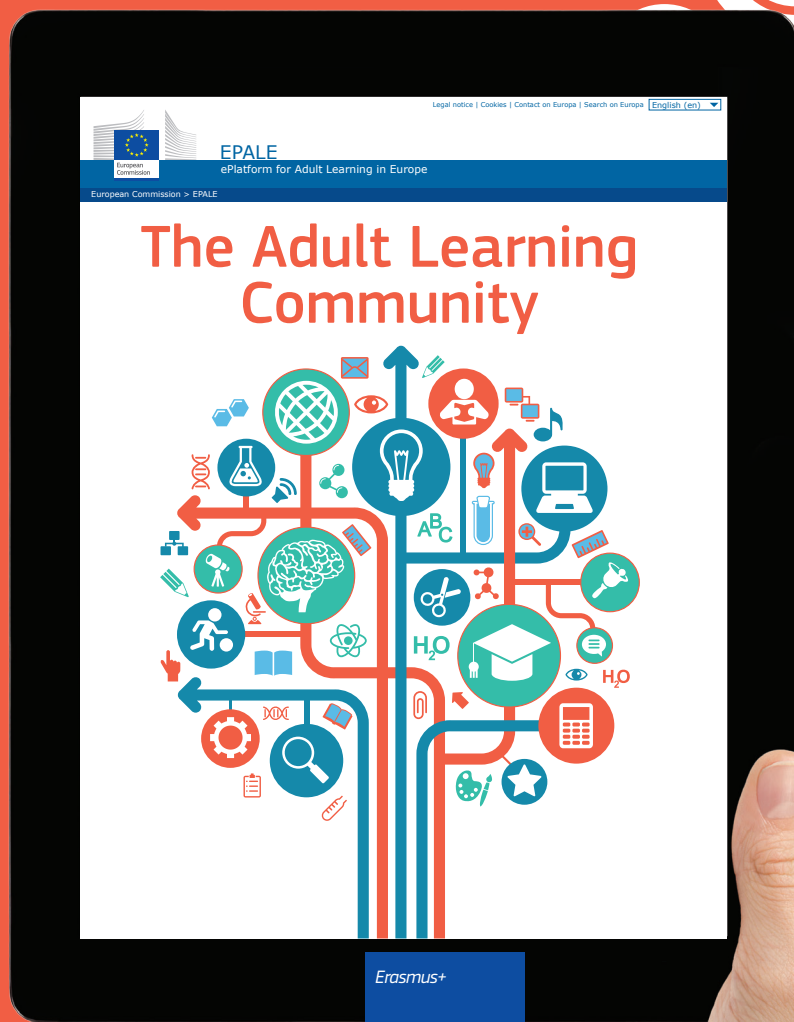




European  
Commission

# EPALE

Electronic Platform for Adult Learning in Europe



# What is EPALE?

The Electronic Platform for Adult Learning in Europe (EPALE) is a unique open membership community for all those involved in adult learning. EPALE is for tutors, trainers, researchers, academics and policy makers.

EPALE is funded by the European Commission as part of its ongoing commitment to improving the quality of adult learning provision in Europe. The project is implemented with the support of the Education, Audiovisual and Culture Executive Agency (EACEA).

## One-stop site

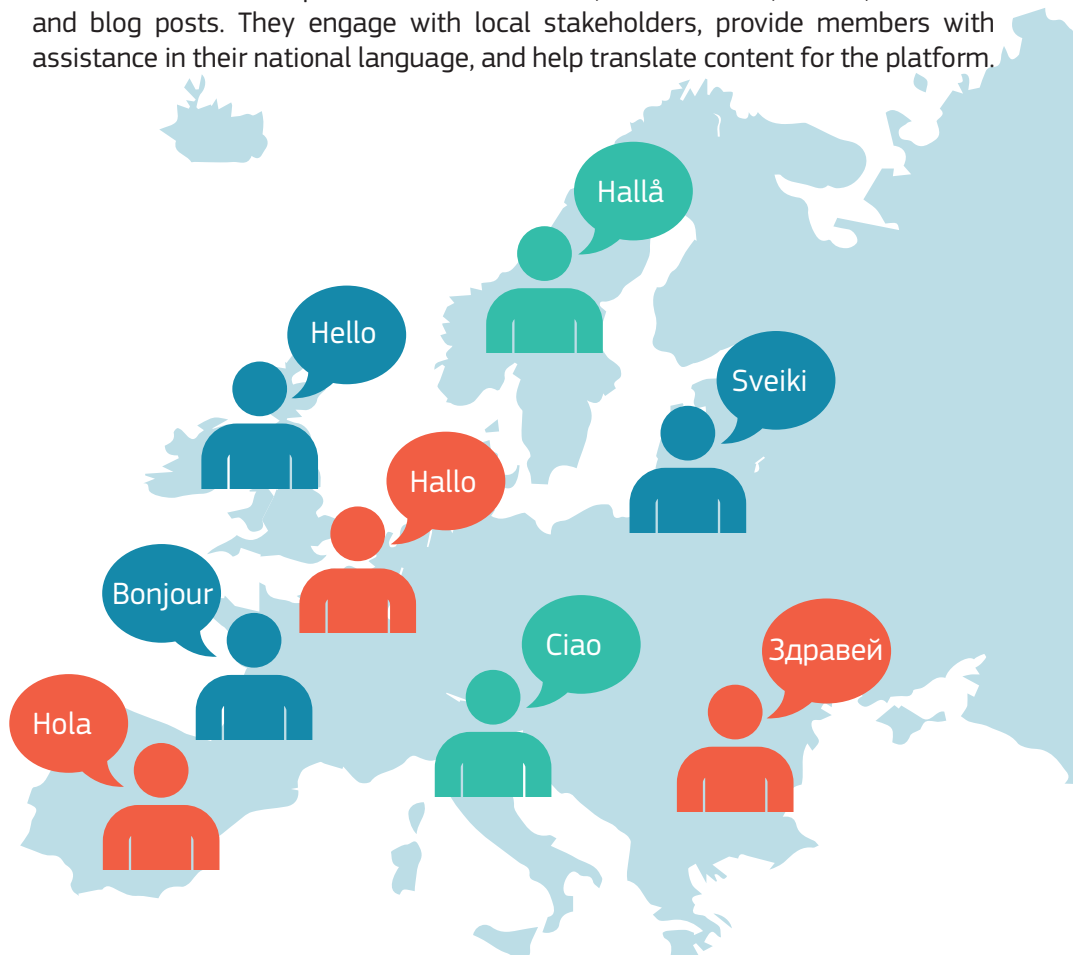
EPALE supports finding and sharing **best practices, news, policy developments, blog posts, events and resources** on adult education. It also provides a space where members can make professional connections using the **partner search** feature.



## Multilingual community

EPALE is available in the **24 official languages** of the EU. In order to cater for the multilingual community, there are **30 National Support Services (NSS)** established across Europe.

Each NSS identifies important national content, such as news, events, resources and blog posts. They engage with local stakeholders, provide members with assistance in their national language, and help translate content for the platform.





# What is in it for you?

There are plenty of benefits to joining the EPALE community.

## Join a diverse adult learning family

EPALE aims to build a unified adult learning community on a national and European level. When you join EPALE you can communicate with different adult learning actors, such as trainers, policy-makers and volunteers.

## Network with similar-minded individuals

As a member of EPALE you can discuss ideas and share information with other people in your country or in Europe, working in your sector. The platform is perfect for finding partners or sharing experiences and ideas related to your adult learning project!

## Step outside your professional circle

EPALE offers something new to the adult learning sector – it gives you the ability to easily get in touch with European adult learning professionals from outside your usual professional circle – policy makers, bloggers, researchers, volunteers, tutors, trainers and more.

You may be a practitioner or tutor who wants to share an opinion on an adult learning related topic; a researcher who has written a paper on a new methodology; a policy maker with an intriguing proposal; or a trainer who would like to share best practice, an event, a news article or a resource that their peers would be interested in. EPALC can give you immediate exposure not only in Europe, but also across the world.

EPALE members can access over 1000 high-quality resources related to adult learning. Our community makes sure this rich database is constantly growing.

EPALE will keep you informed about the latest news and developments in the sector, in your country and across Europe.



# How to get involved

To take advantage of all the features EPALE has to offer, you just need to register on the platform.

## Create your EPALE profile



Make it easier to network and connect with your peers and other members on the platform by completing your profile and including as much information as possible. Let the community know about your adult learning experience or current projects in the sector.

## Share your thoughts



We would love to hear your thoughts on different adult learning topics. With just a few clicks you can propose your blog post for publication. Just visit EPALE's blog section to get started.

## Engage in discussions



EPALE has five broad thematic areas which encourage peer-to-peer cooperation, with forums, commenting, rating, and polling. The thematic pages are a space to provide information and an area where like-minded users can come together.

## Keep the community updated



Found an interesting resource? Learnt about a new methodology or an upcoming event on adult learning? Sharing that information on EPALe is easy and straightforward. Within minutes you can post new content on the platform and spread the word amongst your peers. Visit EPALe's news, resource or event section to find out more.

For more information about EPALE  
in Europe, visit [ec.europa.eu/EPALE](https://ec.europa.eu/EPALE)

@EPALE\_EU 

EPALE 

Adult Learning in Europe 

For more information about EPALE in Ireland,  
visit [www.leargas.ie](https://www.leargas.ie) or email [epale@leargas.ie](mailto:epale@leargas.ie)

@Leargas 

Léargas 