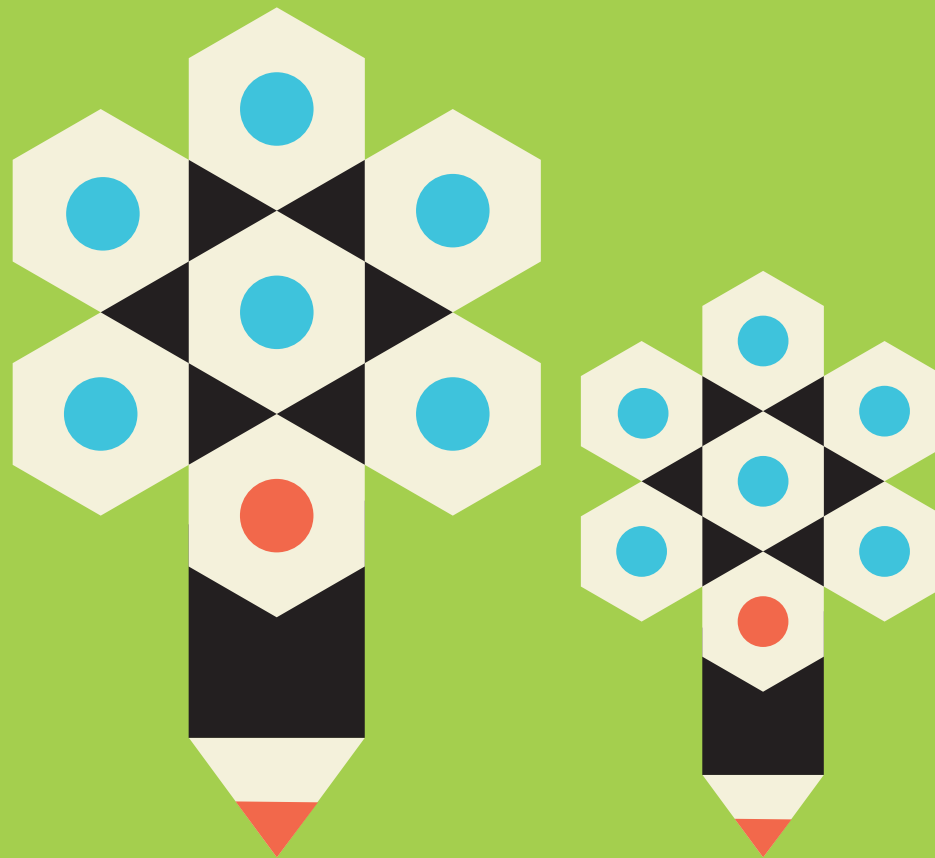


Erasmus+

Adult Education

Funded Projects



2018



Riailtas na hÉireann
Government of Ireland



Adult Education Mobility Projects, Key Action 1 (KA104), 2018 deadline, allocated funds

Name	County	ID	Project Title	Funding
DUBLIN ADULT LEARNING CENTRE	Dublin	2018-1-IE01-KA104-038629	Staff Development	8,525
CDETB - Curriculum Development Unit - professional development	Dublin	2018-1-IE01-KA104-038631	Prison Education, The Arts and Social Enterprise.	5,235
The Social and Health Education Project Ltd	Cork	2018-1-IE01-KA104-038638	SHEP KAI Staff Mobility (2018-2020)	35,110
Tipperary ETB Administrative Offices	Tipperary	2018-1-IE01-KA104-038652	Staff Development Plan	31,860
Limerick and Clare Education and Training Board	Limerick	2018-1-IE01-KA104-038662	Integrating Language Literacy and Numeracy in Adult Education Provision	35,490
Waterford and Wexford ETB	Wexford	2018-1-IE01-KA104-038664	Staff Development Plan	11,030
National Adult Literacy Agency (NALA)	Dublin	2018-1-IE01-KA104-038666	Investing in professional development for NALA staff and student volunteers	19,385
TRANSGENDER EQUALITY NETWORK IRELAND COMPANY LIMITED BY GUARANTEE	Dublin	2018-1-IE01-KA104-038673	Developing Trans Learning in Ireland	28,590

Adult Education Strategic Partnerships, Key Action 2 (KA204), 2018 deadline, allocated funds

Name	County	ID	Project Title	Funding (€)
Co-Creation Support Company Limited by Guarantee	Wicklow	2018-1-IE01-KA204-038768	Two Moons	262,349
IRISH RURAL LINK CO-OPERATIVE SOCIETY LIMITED	Westmeath	2018-1-IE01-KA204-038771	Digital Empowerment for Low Skilled Adults	266,977
LIMERICK INSTITUTE OF TECHNOLOGY	Limerick	2018-1-IE01-KA204-038781	Empowering Women from ethnic minorities through Social Enterprise	270,303
MEATH COMMUNITY RURAL AND SOCIAL DEVELOPMENT PARTNERSHIP LIMITED	Meath	2018-1-IE01-KA204-038788	Webquest Learning for NEETs	174,404
PROFEXCEL.NET LTD	Kildare	2018-1-IE01-KA204-038808	Training Hope, wellbeing, and Resilience In Vulnerable Early school leavers	256,249
Roscommon Integrated Development Co. Ltd t/a Roscommon LEADER Partnership	Roscommon	2018-1-IE01-KA204-038802	Promoting Refugee and Migrant Integration through Education	218,341
The Alzheimer Society of Ireland	Dublin	2018-1-IE01-KA204-038786	Later Stage Dementia Care - Blended Learning for Families	64,717

